

Suite Information

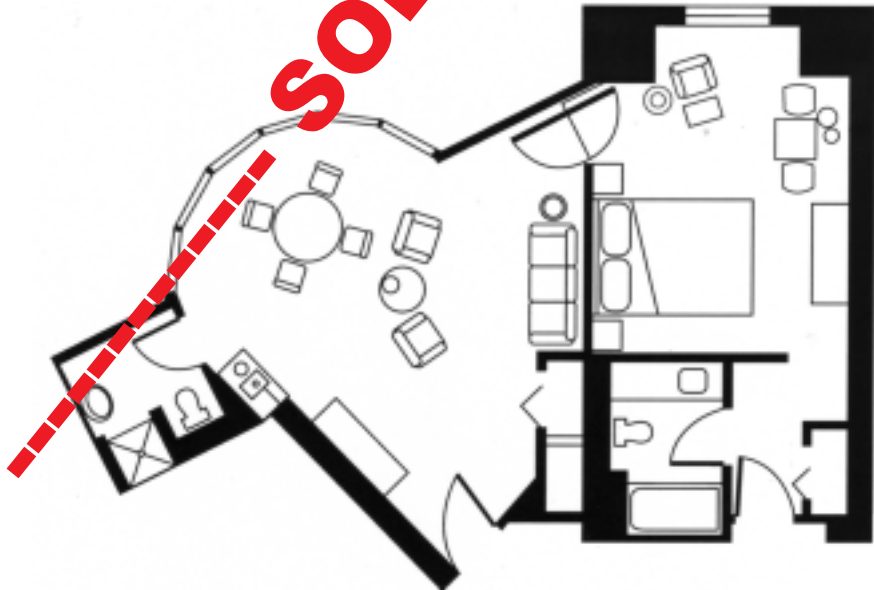
Contact the association office with your suite request as soon as possible.
Once your registration is received, staff will confirm your suite request.

Horizon

12 available – located on floors 3-15
\$525 – Parlor plus 1 King Bedroom



Parlor Dimensions: 500 sq. ft. – Reception capacity for about 15 people
Features: Dining table seats four; Sofa, deeper seats three; Two occasional chairs;
Wet bar with marble counter and coffee maker; Bath with shower only.

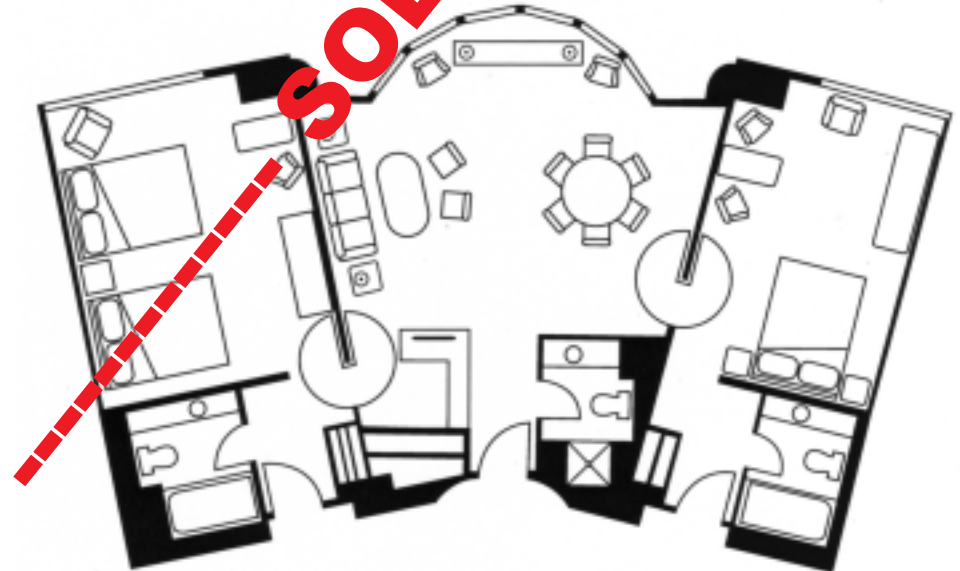


Sunset

19 available – located on floors 3-22
\$525 – Parlor plus 1 Bedroom \$704 – Parlor plus 2 Bedrooms



Parlor Dimensions: 600 sq. ft. – Reception capacity for about 25 people
Features: Dining table seats six; Sofa, deeper seats three; Four occasional chairs;
Wet bar with marble counter, coffee maker, refrigerator; Bath with shower only.



Suite Information

Contact the association office with your suite request as soon as possible.
Once your registration is received, staff will confirm your suite request.

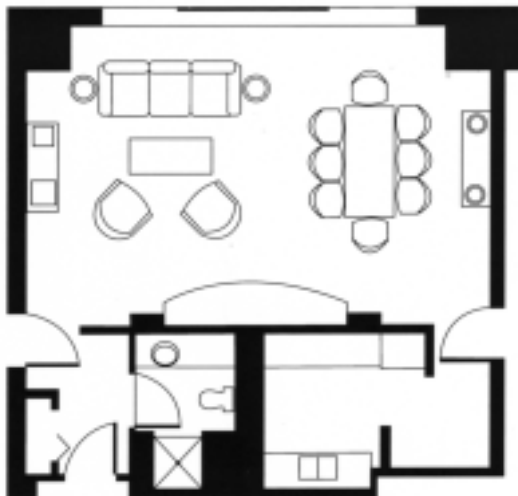
Terrace & Balcony

4 available - all on 3rd floor

\$700 – Parlor plus 1 King Bedroom \$879 – Parlor plus 2 Bedrooms*



Parlor Dimensions: 630 sq. ft. – Reception capacity for about 30 people
Features: Full Bath; Full bar area with full-sized refrigerator and coffee maker; Dining table seats eight. All parlors and bedrooms have access to outdoor terrace or balcony. [**only one Balcony suite has access to two bedrooms*]



Penthouse

2 available

\$850 – Parlor plus 1 Bedroom \$1,029 – Parlor plus 2 Bedrooms



Parlor Dimensions: 680 sq. ft. – Reception capacity for about 30 people
Features: Armoire with personal safe; Full guest bathroom with shower; Executive desk workspace with electrical and data connections; Two seating areas (one suitable for a small meeting).

